

U.S. Copyright Notice

No further reproduction or distribution of this copy is permitted by electronic transmission or any other means.

Section 108: United States Copyright Law

The copyright law of the United States [Title 17, U.S. Code] governs the making of photocopies or other reproductions of copyrighted materials.

Under certain conditions specified in the law, libraries and archives are authorized to furnish a photocopy or other reproduction. One of these specified conditions is that the reproduction is not to be used for any purpose other than private study, scholarship, or research. If a user makes a request for, or later uses, a photocopy or reproduction for purposes in excess of "fair use", that use may be liable for copyright infringement.

Seed coat micromorphology of South American species of *Hybanthus* (Violaceae)

Micaela Noemí Seo

M. N. Seo (*micaseo@agro.uba.ar*), LACyE. Fac. de Cs. Exactas y Naturales, Univ. de Buenos Aires, Cdad. de Buenos Aires, Argentina. Present adress for MNS: IFEVA, Fac. de Agronomía, Univ. de Buenos Aires, Av. San Martín 4453 (C1417DSE) Cdad. de Buenos Aires, Argentina.

The seed-coat of several species of *Hybanthus* subg. *Ionidium* from South America were studied by SEM (scanning electronic microscopy). Three different levels of sculpture were observed on the seed coat. The micro-morphological patterns showed great variation between the species and should be considered as additional characters in future taxonomic treatments. The presence of a conspicuous elaiosome was observed; this structure is well known in the genus *Viola* and is most likely related to seed dispersal mediated by ants.

The genus *Hybanthus* Jacq. (Violaceae) comprises over 100 species of herbs, shrubs and treelets distributed throughout the tropical and subtropical areas of the world, concentrated in Latin America with nearly 70 species; 20 species occur in Africa and Madagascar, five in Asia and 11 in Australia (Bennett 1972). In South America, the genus is represented by nearly 45 species (Schulze-Menz 1936, Sanso et al. 2008). According to the traditional classification (Hekking 1988), *Hybanthus* belongs to subfamily *Violoideae* and tribe *Violeae*.

Several taxonomic studies have been performed in *Hybanthus* (Schulze-Menz 1936, Sparre 1950, Bennett 1972, Souza 2002) and the species-level taxonomy is mainly based on floral characters. One of the major, unresolved problems is related to the identification of plants with fruits.

According to traditional studies in *Violaceae* (Corner 1976, Culver and Beattie 1978, Gil-Ad 1998), the seeds in this family are exostegmatic, ovoid to globose in shape and possess a conspicuous linear raphe and an exostomal aril. The microstructure of seeds provides valuable characters of high significance for taxonomic classification (Barthlott 1984). The taxonomic complexity of this group is due to the lack of clear morphological delimitation between some species, but the seed coat micro-morphology of *Hybanthus* has not been analyzed and would provide extra information in the delimitation of some species. Recent molecular studies (Feng 2005, Tokuoka 2008) have shown that the genus *Hybanthus* is polyphyletic and for this reason Ballard et al. (2005) proposed to split the genus into seven lineages, each one supported by a distinctive combination of molecular, morphological, chromosomal and anatomical features. According to this treatment, all the species in

Latin America and southwestern USA would be transferred to the new genus *Pombalia* Vand.

The principal objectives of this study were to analyze the micro-morphology of the seed coat of some South American species of *Hybanthus* with a scanning electron microscope (SEM) in order to provide additional characters of taxonomic significance.

Material and methods

The seeds were mainly taken from mature capsules collected in the field in northeastern Argentina, in the provinces of Misiones, Corrientes and Entre Ríos, in the summers between 2005 and 2007 (Seo 2008). Additional seeds were obtained from herbarium collections (CTES and SI). The provenance and vouchers of each species are summarized in Table 1. Voucher specimens were deposited in BAFC and SI. At least five seeds for each species were analyzed. The SEM studies were performed on seeds mounted on stubs and then methalized in a JEOL JPC-1100 with palladium gold. Digital photographs were taken with a JEOL jsm-6360 LV. The SEM observations were analyzed according to Barthlott (1981, 1984).

Results

The analyzed seeds were ovoid or globose in shape, with a wide chalazal region. In *Hybanthus calceolaria* (Fig. 1A–B) and *H. velutinus* (Fig. 1D–E) a conspicuous aril or elaiosome in the micropyla was observed.

In the studied species of *Hybanthus*, three different levels of outer seed coat sculpture were observed (Table 2;

Table 1. List of studied species of *Hybanthus*, localities and voucher specimens.

Species	Procedence and voucher number
<i>H. atropurpureus</i>	Bolivia. Depto Santa Cruz, Prov. Cordillera, Camino Camir. Nee 51288 (SI)
<i>H. atropurpureus</i>	Tucumán, Depto Tucumán, Tucumán, Jard. Bot. de Fund. Lillo. Seo 55 (BAFC)
<i>H. bicolor</i>	Misiones. Depto Concepción, Isla de Bosque. Biganzoli 1619 (SI)
<i>H. bicolor</i>	Corrientes. Depto Santo Tomé, ruta 37, Virasoro. Seo 2, 36 (BAFC)
<i>H. bigibbosus</i>	Misiones. Depto Gral. Manuel Belgrano, res. de Vida Silvestre Uruguaf. Múlgura de Romero 3866 (SI)
<i>H. bigibbosus</i>	Misiones. Depto Iguazú, Pto. Iguazú, PN. Cataratas del Iguazú, sendero Macuco. Seo 23, 27, 47 (BAFC)
<i>H. calceolaria</i>	Salta. Depto Orán, Aguas Blancas a Angosto del río Pescado. Zuloaga 7682 (SI)
<i>H. calceolaria</i>	Corrientes. Depto Ituzaingó, Mil viviendas Yaciretá. Camping Soro. Seo 16, 17 (BAFC)
<i>H. communis</i>	Corrientes. Loc. Río Verde, N. Mato Grosso. Hatschbach 35993 (CTES)
<i>H. communis</i>	Entre Ríos. Depto Concordia, Baln. La Tortuga Alegre. Bacigalupo 1612 (SI)
<i>H. communis</i>	Chaco, Depto 1 de Mayo, Isla del Cerrito. Seo 31 (BAFC)
<i>H. communis</i>	Misiones, Depto Iguazú, PN. Cataratas del Iguazú, Isla San Martin. Seo 42, 51(BAFC)
<i>H. hieronymi</i>	Jujuy, Depto Ledesma, PN. Calilegua. Ahumada and Agüero 8492 (SI)
<i>H. hieronymi</i>	Jujuy. San Pedro, S. S. de Jujuy. Morrone 2779 (SI)
<i>H. hieronymi</i>	Salta, Depto Orán, San Román de la Nueva Oran. Pensiero and Marino 4586 (SI)
<i>H. leucopogon</i>	Corrientes. Depto Monte Caseros, Ayo- Curupí. Schinini 17495 (CTES)
<i>H. leucopogon</i>	Corrientes, Depto Mercedes, Mercedes. Seo 34 (BAFC)
<i>H. leucopogon</i>	Corrientes, Depto Mercedes, entrada a Yofré. Solis Neffa 48 (CTES)
<i>H. longistylus</i>	Formosa, Depto Matacos, Ing. G. Juarez. Schinini 35335 (CTES)
<i>H. longistylus</i>	Misiones, Depto San Ignacio, N de San Ignacio. Krapovickas and Cristóbal 28698, 28737 (CTES)
<i>H. nanus</i>	Entre Ríos, Depto Colón, de San Salvador a Concordia. Troncoso 1972 (SI)
<i>H. nanus</i>	Entre Ríos, Depto Colón, PN. El Palmar, arroyo de los Loros. Seo 29, 30, 53 (BAFC)
<i>H. paraguariensis</i>	Corrientes, Depto Ituzaingó, Ituzaingó, 16 km al E de Ituzaingo. Seo 35 (BAFC)
<i>H. parviflorus</i>	Entre Ríos, Depto Gualaguaychú, cerca Gualaguaychú. Demkura 45 (BAFC)
<i>H. parviflorus</i>	Jujuy. Tumbaya, Volcán, 7 km de Volcán. Morrone 2378 (SI)
<i>H. parviflorus</i>	Misiones. Depto Cainguas, Predio UNLP, Res. del Ayo. Cuña- Pirú. Biganzoli 1458 (SI)
<i>H. velutinus</i>	Bolivia, Depto Chuquisaca, Pcia. L. Calvo, El Salvador. Saravia Toledo 11454 (SI)
<i>H. velutinus</i>	Bolivia, Santa Cruz, San José de Chiquitos. Seijo and Solis Neffa 3340 (CTES)

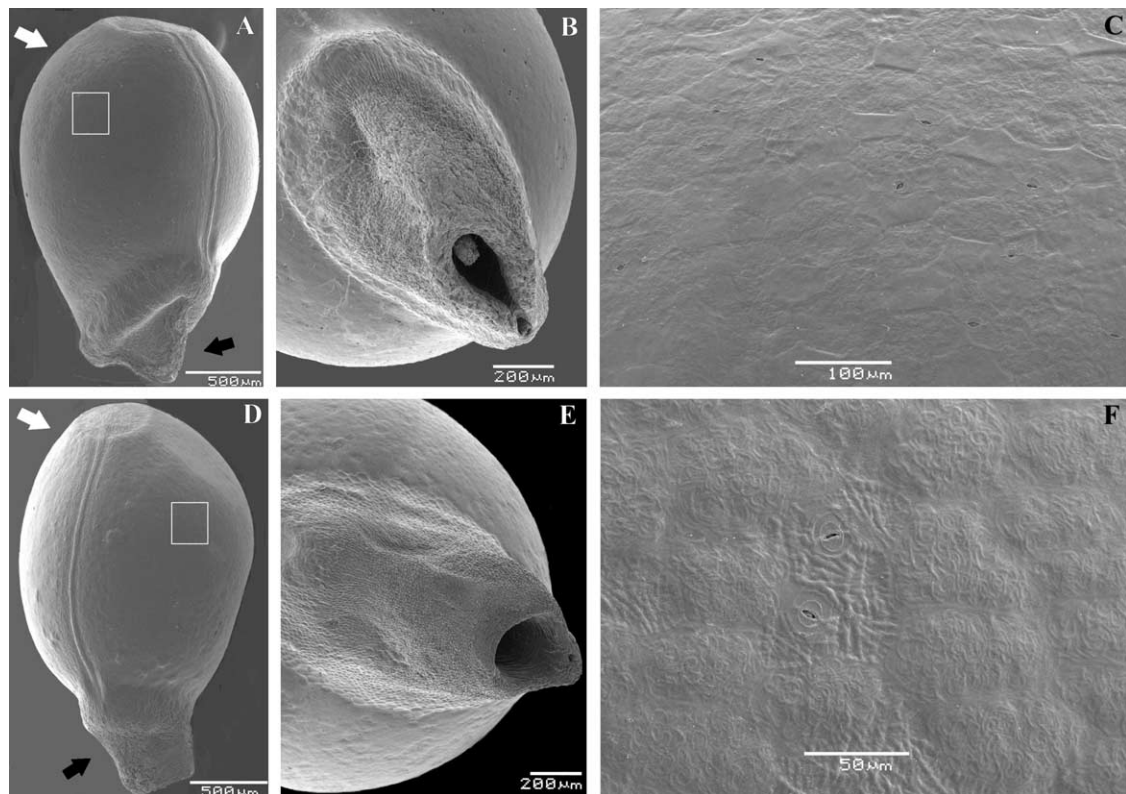


Figure 1. Seeds of *Hybanthus* species examined by SEM. (A)–(C) *H. calceolaria* (Seo 17), (A) dorsal view with the observed seed area, (B) detail of elaiosome, (C) detail of seed coat tetra-hexagonal cells with channelled boundary. (D)–(F) *H. velutinus* (Seijo and Solis Neffa 3340), (D) dorsal view with the observed seed area, (E) detail of elaiosome, (F) detail of seed coat with isodiametric cells with channelled boundary. White arrow = chalazal area, black arrow = micropylar area.

Table 2. Comparison of the primary, secondary and tertiary sculpture of the seed coat of the analyzed species of *Hybanthus*.

Species	Cell shape	Cell boundary	Secondary sculpture	Tertiary sculpture	Figure
<i>H. atropurpureus</i>	elongated	prominent	reticulated	no	2A–B
<i>H. bicolor</i>	4–6-gonal	channeled	striated	no	2G–H
<i>H. bigibbosus</i>	elongated	prominent	reticulated	no	2C
<i>H. calceolaria</i>	4–6-gonal	irregular	striated-irregular	no	1A–C
<i>H. communis</i>	4–6-gonal	channeled	striated	no	2D–E
<i>H. hieronymi</i>	isodiametric	prominent	reticulated	no	3F
<i>H. leucopogon</i>	isodiametric	prominent	striated	no	3C
<i>H. longistylus</i>	isodiametric	prominent	reticulated	no	3D–E
<i>H. nanus</i>	elongated	channeled	striated	no	3A–B
<i>H. paraguariensis</i>	4–6-gonal	channeled	striated	papillae	2F, 3G–I
<i>H. parviflorus</i>	4–6-gonal	prominent	reticulated	no	2I
<i>H. velutinus</i>	isodiametric	channeled	striated	no	1D–F

according to the classification by Barthlott 1981, 1984). The primary sculpture or the cellular pattern in the analyzed species showed a great variation in cell shape. The outline of the cells were isodiametric in *H. calceolaria* (Fig. 1C), *H. velutinus* (Fig. 1F), *H. hieronymi* (Fig. 3F), *H. longistylus* (Fig. 3E) and *H. leucopogon* (Fig. 3C), but elongated in one direction (Table 2) in *H. atropurpureus*

(Fig. 2B), *H. bigibbosus* (Fig. 2C) and *H. nanus* (Fig. 3B). In other species the cells had a tetra- to hexa-gonal shape, like in *H. calceolaria* (Fig. 1C), *H. communis* (Fig. 2E), *H. bicolor* (Fig. 2H), *H. parviflorus* (Fig. 2I) and *H. paraguariensis* (Fig. 2F). Another character of the primary sculpture (Table 2) is the relief of the cell boundary or the anticlinal boundary, which may be channeled such as in

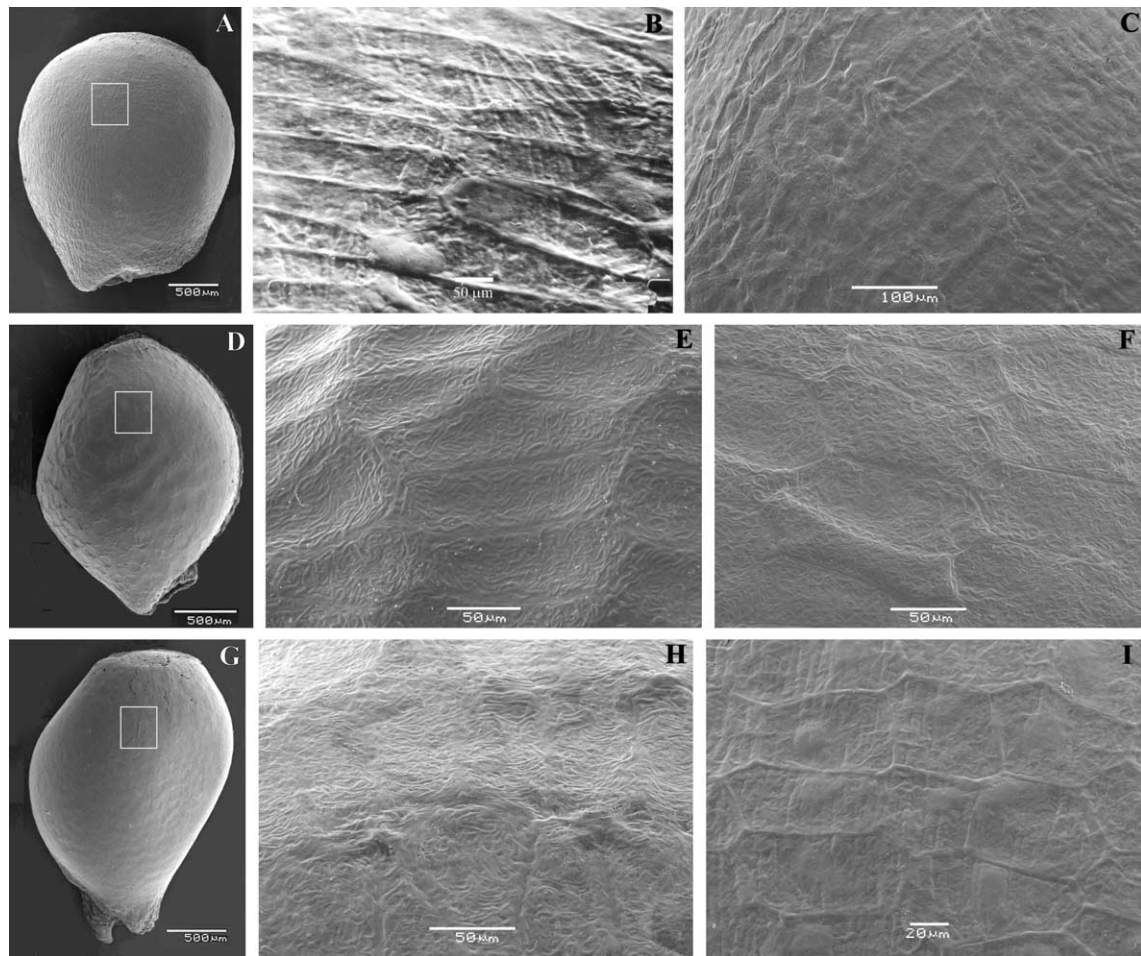


Figure 2. Seeds of *Hybanthus* examined by SEM. (A)–(B) *H. atropurpureus* (Nee 51288), (A) dorsal view with the observed seed area, (B) detail of seed coat with elongated cells and prominent boundary, (C) *H. bigibbosus* (Seo 27) detail of seed coat with elongated cells and prominent boundary. (D)–(E) *H. communis* (Seo 31), (D) dorsal view with the observed seed area, (E) detail of seed coat with tetra-hexagonal cells and channeled boundary, (F) *H. paraguariensis* (Seo 35) detail of seed coat with tetra-hexagonal cells and channeled boundary. (G)–(H) *H. bicolor* (Seo 36). (G) dorsal view with the observed seed area, (H) detail of seed coat with tetra-hexagonal cells and channeled boundary, (I) *H. parviflorus* (Biganzoli 1458) detail of seed coat with tetra-hexagonal cells and prominent boundary.

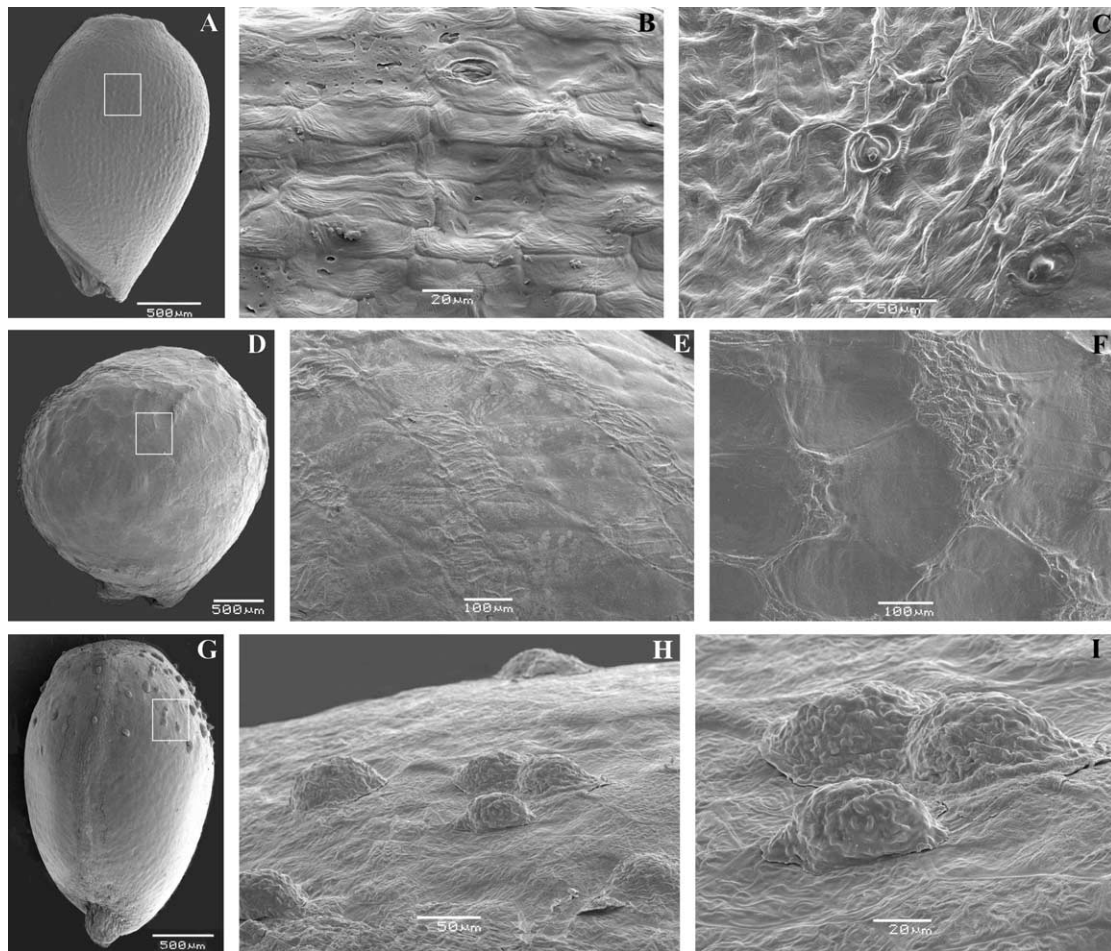


Figure 3. Seeds of *Hybanthus* examined by SEM. (A)–(B) *H. nanus* (Seo 53), (A) dorsal view with the observed seed area, (B) detail of the seed coat with elongated cells and channeled boundary, (C) *H. leucopogon* (Solis Neffa 48) detail of seed coat with isodiametric cells and prominent boundary. (D)–(E) *H. longistylus* (Schinini 35335), (D) dorsal view with the observed seed area, (E) detail of seed coat with isodiametric cells with prominent boundary, (F) *H. hieronymi* (Ahumada and Agüero 8492) detail of seed coat with isodiametric cells with prominent boundary. (G)–(I) *H. paraguariensis* (Seo 35), (G) dorsal view with the observed seed area. (H)–(I) detail of the papillae on the seed surface.

H. calceolaria (Fig. 1C), *H. velutinus* (Fig. 1F), *H. communis* (Fig. 2E), *H. bicolor* (Fig. 2H), *H. paraguariensis* (Fig. 2F) and *H. nanus* (Fig. 3B), or with a prominent cell boundary (Table 2), such as in *H. hieronymi* (Fig. 3F), *H. longistylus* (Fig. 3E) and *H. leucopogon* (Fig. 3C). This last taxon exhibited a particular pattern with several additional prominent regions on the outer periclinal wall.

The secondary sculpture is related to the fine relief of the cell wall (Table 2), the surface of the outer cell wall may be smooth or exhibit a striated micro-ornamentation, like in *H. calceolaria* (Fig. 1C), *H. velutinus* (Fig. 1F), *H. bicolor* (Fig. 2H), *H. communis* (Fig. 2E), *H. leucopogon* (Fig. 3C), *H. paraguariensis* (Fig. 2F) and *H. nanus* (Fig. 3B). However, another group of species, viz. *H. atropurpureus* (Fig. 2B), *H. bigibbosus* (Fig. 2C), *H. parviflorus* (Fig. 2I), *H. longistylus* (Fig. 3E) and *H. hieronymi* (Fig. 3F) exhibited a different micro-ornamentation with an irregular reticulated surface.

Hybanthus paraguariensis exhibited a particular kind of tertiary sculpture (Table 2) with the presence of some globose papillae in the chalazal part of the seed (Fig. 3G–I), which overhang the seed surface.

Discussion

Until now, the knowledge of the seed coat micro-morphology in *Hybanthus* species has been scarce. This is the first report containing SEM information on several species of this genus in South America.

The seed coat of *Hybanthus* showed a particular pattern. The variation detected in the micro-morphology of the seed coat is highly significant and provides additional taxonomic characters that may support the delimitation of the species. The structures detected on the seed coat surface were recognized as species specific, e.g. the prominent anticlinal wall in *H. leucopogon*, the shape of the cells in *H. nanus* and *H. atropurpureus* and the presence of papillae in *H. paraguariensis*.

Some pairs or groups of species with similar macro-morphology were found to have a similar pattern on the seed coat (Table 2), such as the case for *H. communis*, *H. bicolor* and *H. paraguariensis*. These closely related species are frutices to low herbs with alternating leaves and were all found to have a seed coat with tetra-hexagonal cells with a channeled boundary and a fine striated relief on

the outer surface of the cell. Moreover, *H. calceolaria* and *H. velutinus*, two closely related species with similar morphology, also had a similar micro-morphological pattern on the seed surface. The group made up of *H. leucopogon*, *H. longistylus* and *H. hieronymi* are characterized as frutices to herbs with opposite leaves, and they were all found to have a seed coat with isodiametric to irregular cells with a prominent cell boundary, and the secondary sculpture showed a reticulate pattern on the seed relief. Further, *H. bigibbosus* and *H. atropurpureus* are both tall shrubs with opposite leaves and they both had elongated cells on the seed coat and prominent anticlinal walls of the cell boundary.

The conspicuous aril in the micropyla found in some of the analyzed species is morphologically similar to the elaiosome previously observed in some species of *Viola* (Culver and Beattie 1978). In *Viola*, the elaiosome function in the dispersion of the seeds by means of ground-foraging ants.

According to Feng (2005), all the species of *Hybanthus* distributed in Latin America and southwestern USA should be transferred to *Pombalia* (Ballard et al. 2005). However, further studies will be necessary to complete this new classification. For example, in the majority *Hybanthus* species the seed coat micro-morphology has not been analyzed yet. In the light of the results presented here, seed coat analyses with SEM do provide extra characters of high systematic significance.

Acknowledgements – I thank Dr M. Dematteis, M. Sanso, C. Xifreda, A. López, M. López, the curators of BAA, BAB, BAF, CTES, LP, LIL, MCNS, SI, and Rafael Urrejola for the SEM analyses. Thanks also to the Administración de Parques Nacionales of Argentina. This study was supported by CONICET, CIC and IAPT Research Grants 2007.

References

Ballard, H. E. et al. 2005. Dismantling the polyphyletic genus *Hybanthus* Jacq. (Violaceae). – XVII Int. Bot. Congress, Vienna, Austria.

- Barthlott, W. 1981. Epidermal and seed surface characters of plants: systematic applicability and some evolutionary aspects. – Nord. J. Bot. 1: 345–353.
- Barthlott, W. 1984. Microstructural features of seed surfaces. – In: Heywood, V. H. and Moore, D. M. (eds), Current concepts in plant taxonomy. Systematics Association, special. Vol 25. Academic Press, pp. 95–105.
- Bennett, E. M. 1972. A revision of the Australian species of *Hybanthus* Jacquin (Violaceae). – Nuytsia 1: 218–241.
- Corner, E. J. H. 1976. Violaceae. The seeds of Dicotyledons. Vol. 1. – Cambridge Univ. Press.
- Culver, D. C. and Beattie, A. J. 1978. Myrmecochory in *Viola*: dynamics of seed-ant interactions in some West Virginia species. – J. Ecol. 65: 2562–2580.
- Feng, M. 2005. Floral morphogenesis and molecular systematics of the family Violaceae. PhD thesis. – Ohio Univ.
- Hekking, W. H. A. 1988. Violaceae, Flora Neotropica Monographs. – NY Bot. Gard. 46: 204.
- Gil-Ad, N. L. 1998. The micromorphologies of seed coat and petal trichomes of the taxa of *Viola* subsect. Boreali–Americanae (Violaceae) and their utility in discerning ortho-species from hybrids. – Brittonia 50: 91–121.
- Sanso, A. M. et al. 2008. Violaceae. – In: Zuloaga, F. and Morrone, O. (eds), Catálogo de las Plantas Vasculares del Cono Sur. (Argentina, sur de Brasil, Chile, Paraguay y Uruguay). Vol. 3. Monogr. Syst. Bot., Miss. Bot. Gard. 107, pp. 3151–3169.
- Schulze-Menz, G. K. 1936. Morphologisch–Systematische Studien über die Gattung *Hybanthus*. – Bot. Jahrb. Syst. 67: 437–492.
- Seo, M. N. 2008. Estudios sistemáticos y evolutivos en especies argentinas del género *Hybanthus*. (Violaceae). PhD thesis. – Univ. de Buenos Aires.
- Souza, J. P. 2002. Levantamento das espécies de *Hybanthus* Jacq. (Violaceae) do Brasil. MSc thesis. – Univ. do São Paulo.
- Sparre, B. 1950. Estudio sobre las Violáceas argentinas I. Los géneros de *Hybanthus* y *Anchietea*. – Lilloa 23: 515–574.
- Tokuoka, T. 2008. Molecular phylogenetic analysis of Violaceae (Malpighiales) based on plastid and nuclear DNA sequences. – J. Plant Res. 121: 253–260.